



J.D. Marine & Sons

www.jdmarineandsons.com

All Marine work undertaken, Craft for Hire & Charter, Jetty Repair

MULTICAT VESSEL: 'ALEC.D' (Description)



The 'Alec.D'. is a 16.8m x 11.2m highly manoeuvrable,twin propulsion,Multicat type workboat. The wheelhouse and deck equipment has been situated as far aft as possible to provide a clear and unobstructed working area. With a beam of 11.2 metres improves the stability making a very sturdy work platform for all tasks. There is a moonpool situated in the centre of the deck between the two hulls, it can also be supplied with 2no 15m spud legs, which allow the vessel to adapt and position accurately fulfilling a multiple of roles and tasks. The vessel is fitted with towing bollards at the stern along with a quick release towing hook. There are two deck cranes, one Knuckle boom crane 30t/m on the aft and one 50t/m knuckle boom extension crane on the bow.The vessel has a deck carrying capacity of 60t

Her Duties Have Included:

Towing of Barges and Jack-up Platforms
Jetty Repair,Maintenance & Construction
Buoy & Mooring Deployment/Tending
Dredging & Support Services
Load Transportation
Dive Support
Sea/Flood Defence Work

Civil Engineering/Construction Support
Plough & Bed leveling
Site Investigation Work
River & Shallow water work
Renewable Energy Project Support
Survey & Inspection

Tel: 07580932427 - 01792 457174

Office: 58 Mariners Quay, Aberavon, Port Talbot SA12 6AN

Email: enquiries@jdmarineandsons.com - Web:

www.jdmarineandsons.com

Company No: 8142732 - V.A.T. Reg No: 138912203



J.D. Marine & Sons

www.jdmarineandsons.com

All Marine work undertaken, Craft for Hire & Charter, Jetty Repair Specialists

MULTICAT VESSEL: 'ALEC.D' (Specifications)

VESSEL NAME: 'ALEC.D'

TYPE: Multicat- Multi Purpose Workboat

BUILDER: R.S Hayes

DESIGN: Steel, Twin Hull

DATE OF BUILD: 1969 (Re Build 2004) (Re-fit 2015)

YARD No: 507

OFFICIAL No: 919305

PORT OF REGISTRY: Swansea

CALL SIGN: ZIS05

MMSI No: 235036673

LENGTH: 16.8m

BEAM: 11.6m (Inc Fendering)

DRAFT: 1.9m Aft 0.8m Fwd

AIR DRAFT: 10.5m (Mast up) / 7.0m (Mast down)

DISPLACEMENT: 190,000kg

CRUISE SPEED: 6.5kn

MAX SPEED: 7kn

BOLLARD PULL: 12t

MAIN ENGINE'S: 2no 500hp Cummins NTA855M

TOTAL POWER: 1,000 Bhp / 740kw

FUEL CAPACITY: 10,500 Ltrs

FUEL CONSUMPTION: 136 ltr/hr

RANGE: 500nm

FRESH WATER CAPACITY: 4540 Ltrs

GENERATORS: 2no- 20kva/ 1no- 110kva

CRANES: 1no Fwd - 50t/m & 1no Aft - 30t/m

SPUD LEGS: 2no @ 12m x 300mm

MOONPOOL: 500mm Diameter

ACCOMODATION: 4 person

GALLEY - w/c-SHOWER.

CERTIFICATION/CLASS: MCA Category 3 (20m from safe haven) MECAL No: M03WB0160263





J.D. Marine & Sons

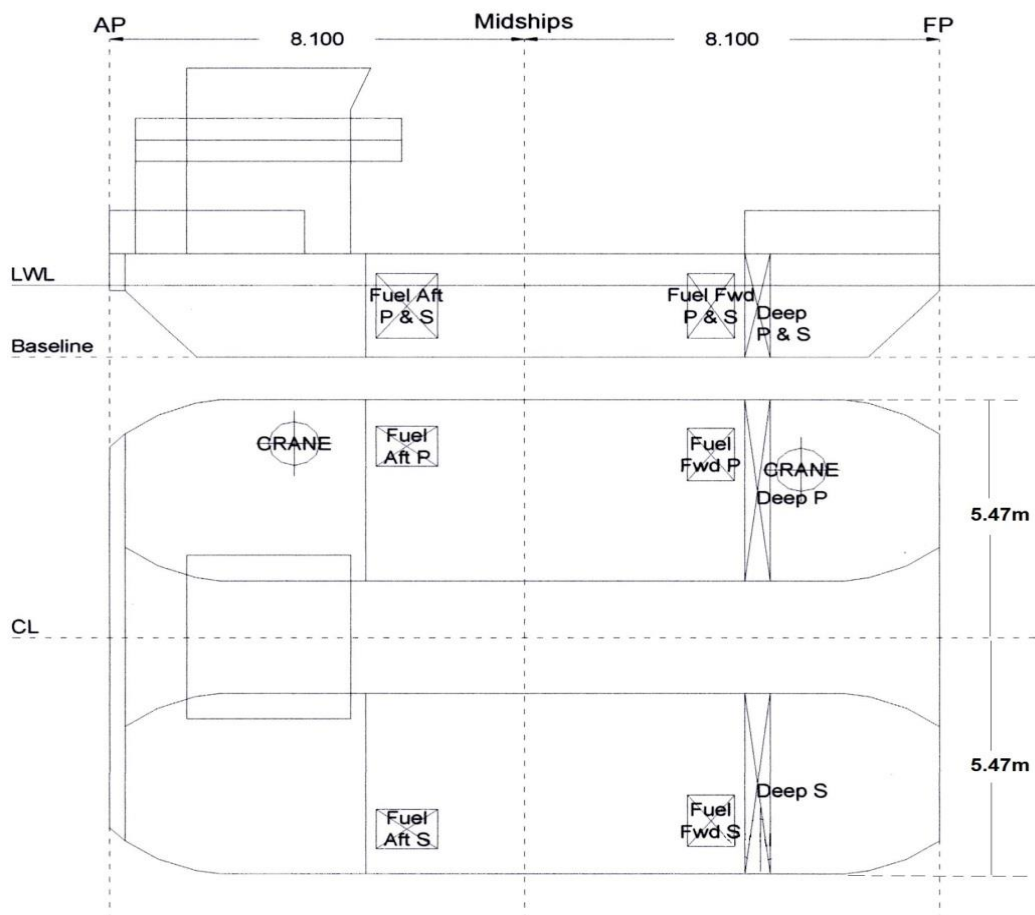
www.jdmarineandsons.com

All Marine work undertaken, Craft for Hire & Charter, Jetty Repair Specialists

MULTICAT VESSEL: 'ALEC.D' (General Layout)

ALEC.D:

General Arrangement





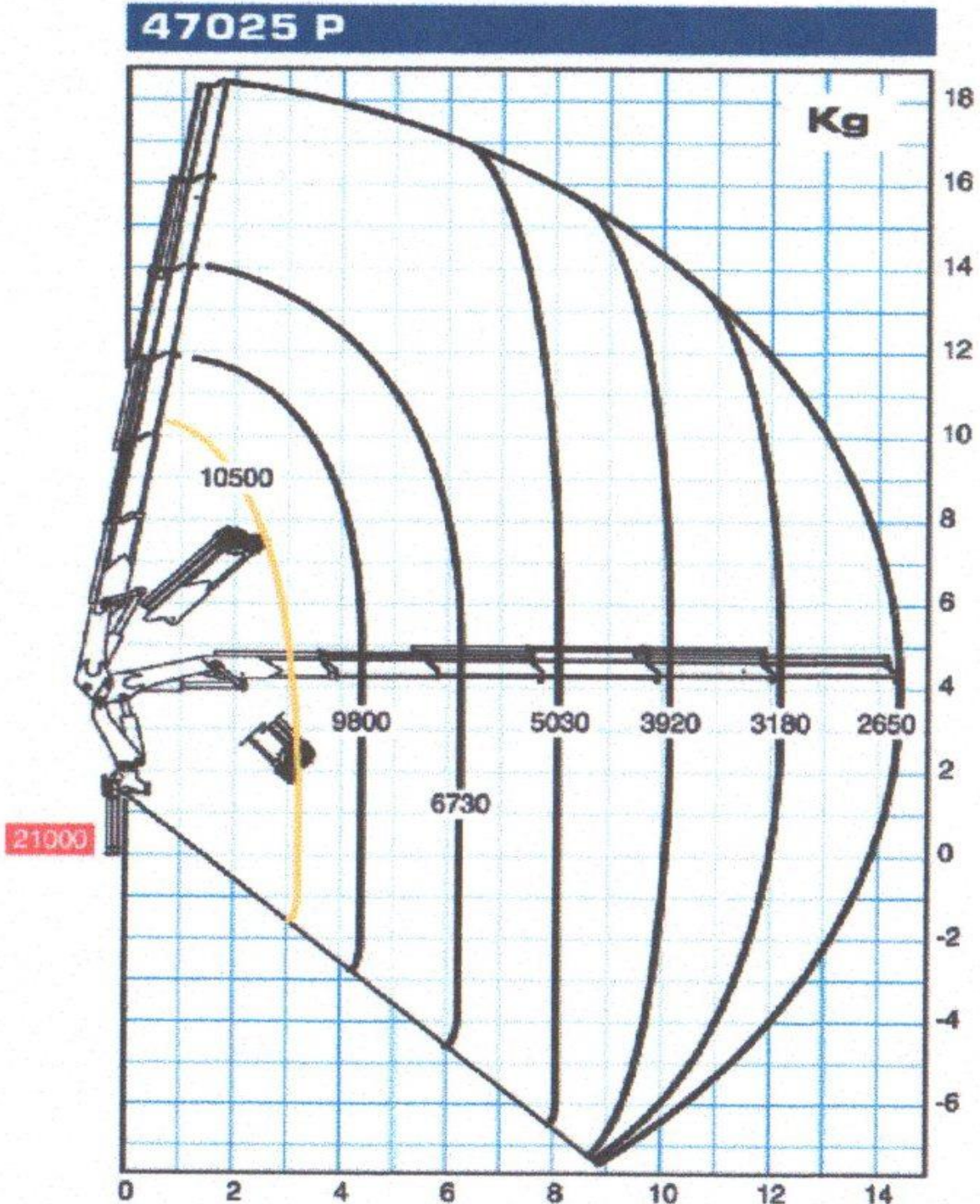
J.D. Marine & Sons

www.jdmarineandsons.com

All Marine work undertaken, Craft for Hire & Charter, Jetty Repair Specialists

MULTICAT VESSEL: 'ALEC.D' (Forward Deck Crane Lifting Chart)

SERIAL No: GA180308



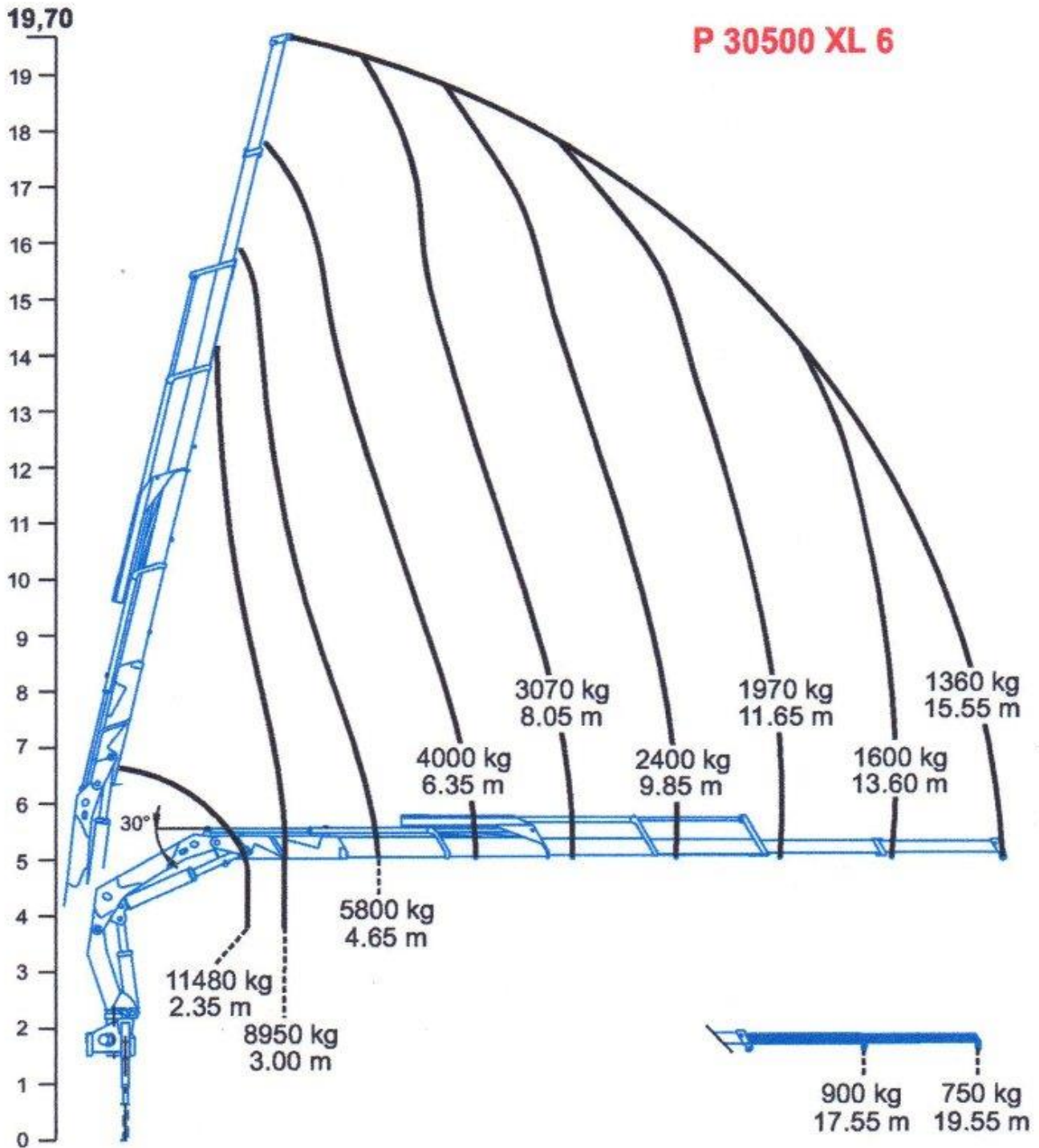


J.D. Marine & Sons Ltd

www.jdmarineandsons.com

All Marine work undertaken, Craft for Hire & Charter, Jetty Repair Specialists

MULTICAT VESSEL: 'ALEC.D' (Aft Deck Crane Lifting Chart)



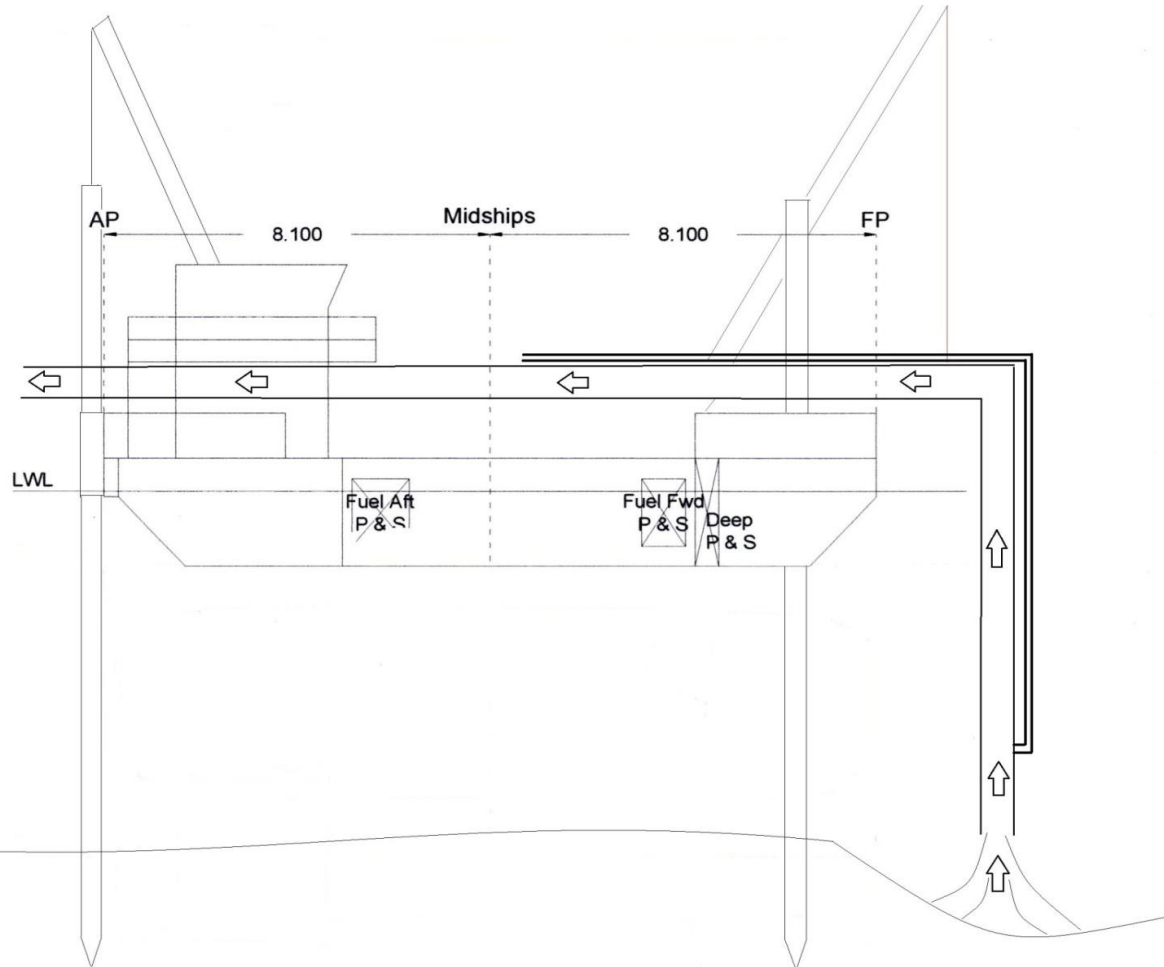


J.D. Marine & Sons

www.jdmarineandsons.com

All Marine work undertaken, Craft for Hire & Charter, Jetty Repair Specialists

MULTICAT VESSEL: 'ALEC.D' (Dredge Plan 1)



The 'ALEC.D.' is a multipurpose vessel which can be used for many tasks allowing the vessel to be adapted to suit the contract. One of the vessels roles is material dredging using the 'Air Lift' method. This tried & tested method of dredging is ideal for Marinas, rivers, docks and harbors. (Other types of dredging techniques also available on request). The vessel is fitted with two 12 Meter long x 250mm Diameter steel spud legs which are positioned on the bow and the stern of the vessel. The spud legs are independently operated by the forward & aft deck mounted cranes, the forward crane is also utilized to position & move the dredge arm. With the use of these spud legs along with the vessels powerful twin engines allow exact GPS positioning allowing a controlled and level dredge. The Dredge arm consists of sections of heavy gauge 300mm diameter steel pipe which can be extended to suit the required depth, with a working depth of between 2 – 10 Meters. The dredge arm is fitted with a 60mm diameter high volume air hose injecting large volumes of air into the lower section, allowing all materials to be pulled up into the dredge arm and discharged some 25 meters away. With this large capacity dredge pipe enables the vessel to remove large quantities of material & is capable of handling materials such as mud, sand, shale, stones & rocks. Making it ideal for rivers, docks & locks. For more information on the vessel see the vessels specification information



J.D. Marine & Sons

www.jdmarineandsons.com

All Marine work undertaken, Craft for Hire & Charter, Jetty Repair Specialists

MEASUREMENT CHART: 'ALEC.D'

VESSEL: 'ALEC.D'

<u>DESCRIPTION</u>	<u>METRES</u>	<u>FEET</u>
	16.80m	55ft 2"
LENGTH (Excluding spud socket)		
	11.10m	36ft 5"
BEAM (Excluding Fenders)		
	11.60m	38ft
BEAM (Including Fenders)		
(Aft)	1.90m	6ft 3"
(Fwd)	1.0m	3ft 3"
	10.51m	37ft
AIR DRAFT –(Top mast to waterline)		
HEIGHT(Waterline to deck)	0.76m	30"
HEIGHT (Deck to monkey island)	4.95m	16ft 3"
HEIGHT(Monkey island to top of mast)	4.80m	15ft 9"
HEIGHT(Monkey Island to top exhaust)	1.35m	4ft 5"
AIR DRAFT REDUCED –HEIGHT (mast down)		
(Waterline to top of exhaust)	7.0m	22ft 9"



J.D. Marine & Sons

www.jdmarineandsons.com

All Marine work undertaken, Craft for Hire & Charter, Jetty Repair Specialists

MULTICAT VESSEL: 'ALEC.D'

