



# J.D. Marine & Sons Ltd

[www.jdmarineandsons.com](http://www.jdmarineandsons.com)

All Marine work undertaken, Craft for Hire & Charter, Jetty Repair

## MULTICAT VESSEL: 'BEV.D' (Description)



The 'Bev.D' is a 18.42m x 6m versatile highly manoeuvrable, twin propulsion, Multicat type workboat. The wheelhouse and deck equipment has been situated as far aft as possible to provide a clear and unobstructed working area. There is an Copma 30 t/m Knuckle boom crane positioned on the bow with a lifting of 2200kgs @ 12m. The vessel has a deck carrying capacity of 60t with A 8.5t deck winch & 3t capstan. Towing bollards situated at the bow & stern with a 10t tow hook. The vessel is fitted with a bow roller with push knees and as an option can be fitted with a stern 'A' Frame & Sweepbeam/plough box 6m x 1.2m.

### **Vessel Capabilities:**

Towing of Barges and Jack-up Platforms  
Jetty Repair, Maintenance & Construction  
Buoy & Mooring Deployment/Tending  
Dredging & Support Services  
Load Transportation  
Dive Support  
Sea/Flood Defence Work

Civil Engineering/Construction Support  
Plough & Bed leveling  
Site Investigation Work  
River & Shallow water work  
Renewable Energy Project Support  
Survey & Inspection

**Tel: 07580932427 - 01792 457174**

Office: 58 Mariners Quay, Aberavon, Port Talbot SA12 6AN

Email: [enquiries@jdmarineandsons.com](mailto:enquiries@jdmarineandsons.com) Web: [www.jdmarineandsons.com](http://www.jdmarineandsons.com)

Company No: 8142732 - V.A.T. Reg No: 138912203



# J.D. Marine & Sons Ltd

[www.jdmarineandsons.com](http://www.jdmarineandsons.com)

All Marine work undertaken, Craft for Hire & Charter, Jetty Repair Specialists

## MULTICAT VESSEL 'BEV.D.' (Specifications)

**VESSEL NAME:** 'BEV.D.'

**TYPE:** Multicat- Multi Role Vessel

**BUILDER:** IHC Deltawerf - Netherlands

**DESIGN:** Steel Single Hull

**DATE OF BUILD:** 1989

**YARD No:** 870

**OFFICIAL No:** 709499

**IMO No:** n/a

**PORT OF REGISTRY:** Swansea, UK

**CALL SIGN:** MLME4 Mike-Lima-Mike-Echo-Four

**MMSI No:** 235021463

**LENGTH:** 18.42m

**BEAM:** 6.0m -6.6m (Inc Fendering)

**DRAFT:** 1.7m Aft 1.2m Fwd

**AIR DRAFT:** 7.77m (Mast up) / 4.7m (Mast down)

**Displacement:** 31.20t **DWT:** 109.19t

**GT/NT:** 54.62/ 27.20t

**DECK LOAD:** 10t/m<sup>2</sup>

**FREE DECK SPACE:** 71m<sup>2</sup>

**CRUISE SPEED:** 7.5kn

**MAX SPEED:** 8kn

**BOLLARD PULL:** 7.5t

**TOW HOOK:** 10t

**MAIN ENGINE'S:** 2no 250hp GM Detroit 8V71

**TOTAL POWER:** 700 Bhp / 518kw

**FUEL CAPACITY:** 20m<sup>3</sup>

**FUEL CONSUMPTION:** 90ltr/hr

**RANGE:** 2,000nm

**GENERATORS:** 1no- 42kva 415v

**WINCHE:** 8.5t **CAPSTAN:** 3t

**CRANES:** 1no Fwd - 30t/m - Compa 3330/4

**CRANES:** 1no Aft - 7.5t/m - Atlas 3006A1

**CERTIFICATION/CLASS:** SWB2 - Category 3 **Unique No:** S00WB0180155



**FUEL TANKS:** M/E Port & Stbd 3700Ltrs Each (7,400L)

**FUEL TANKS:** Transfer Port & Stbd 10580Ltrs Each

**FUEL TANKS TOTAL:** x4 tanks= 28,560Ltrs

**FUEL TRANSFER:** 12m<sup>3</sup>/hr - 1.5 bar

**FRESH WATER TANKS:** 6m<sup>3</sup> Transfer 10m<sup>3</sup>/hr

**FRESH WATER PUMP:** 25m<sup>3</sup>/hr - 1.5 bar

**FRESH WATER CAPACITY:** 6m<sup>3</sup> / 6300Ltrs

**A' FRAME;** Stern A frame

**PLOUGH:** 6m x 1.2m.

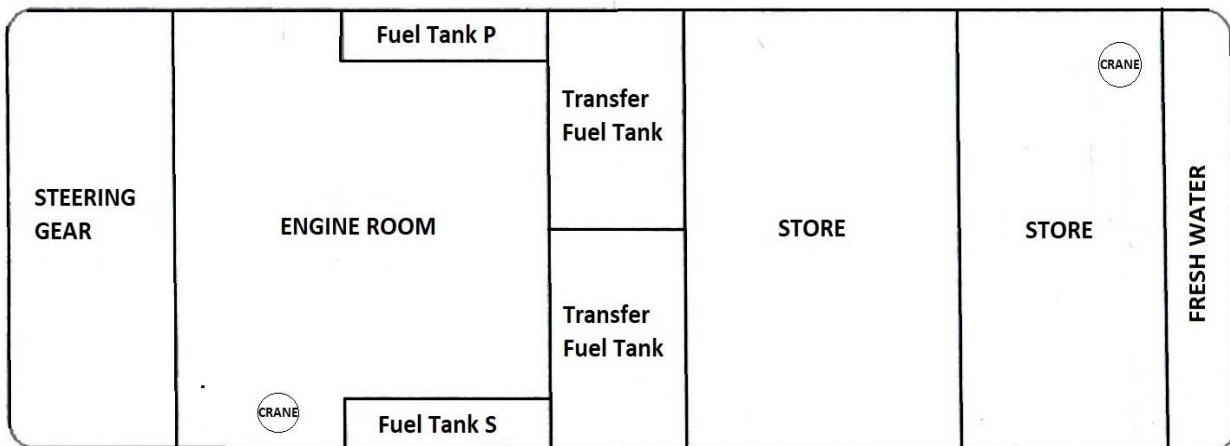
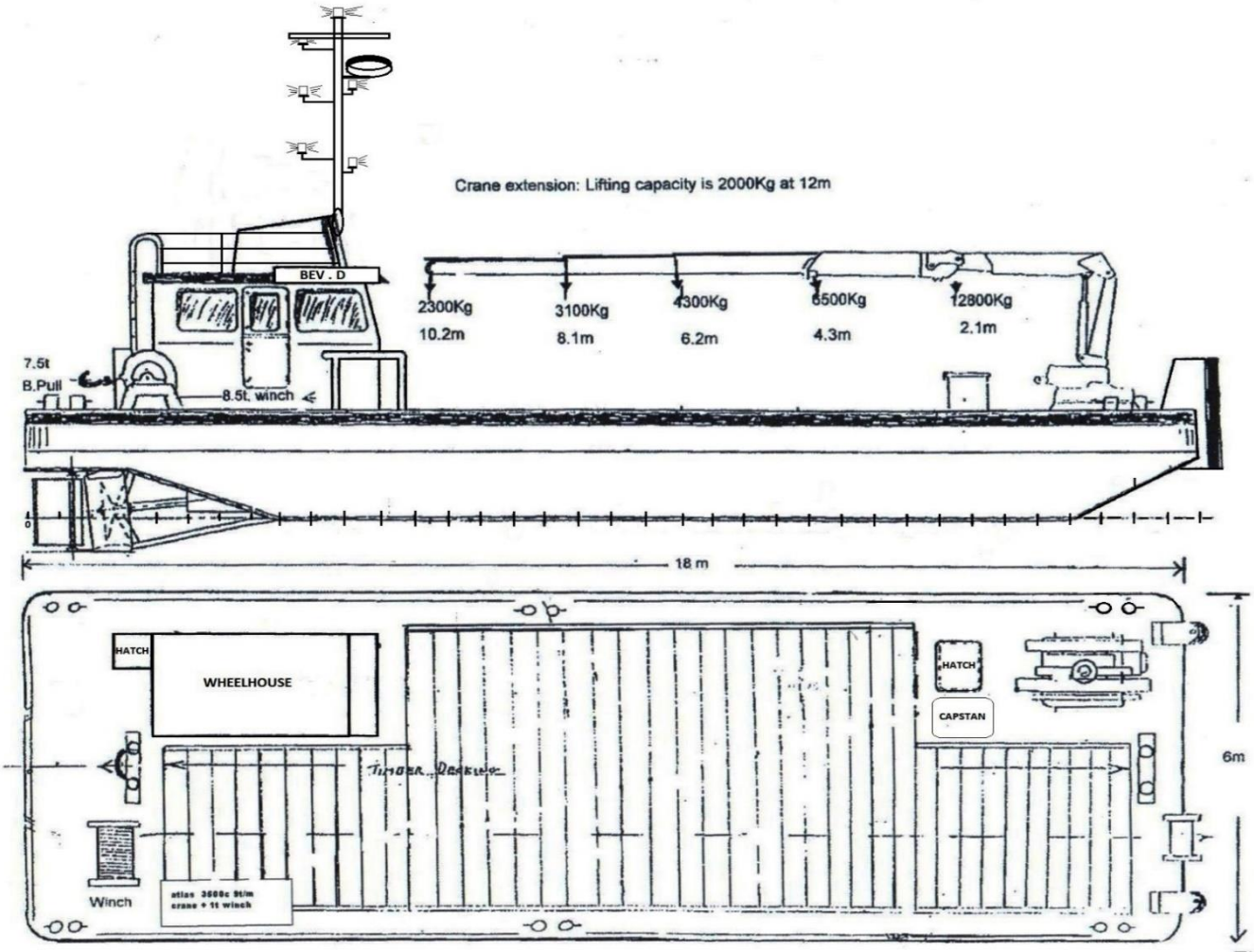


# J.D. Marine & Sons Ltd

[www.jdmarineandsons.com](http://www.jdmarineandsons.com)

All Marine work undertaken, Craft for Hire & Charter, Jetty Repair Specialists

## MULTICAT VESSEL: 'BEV.D' (General Layout)



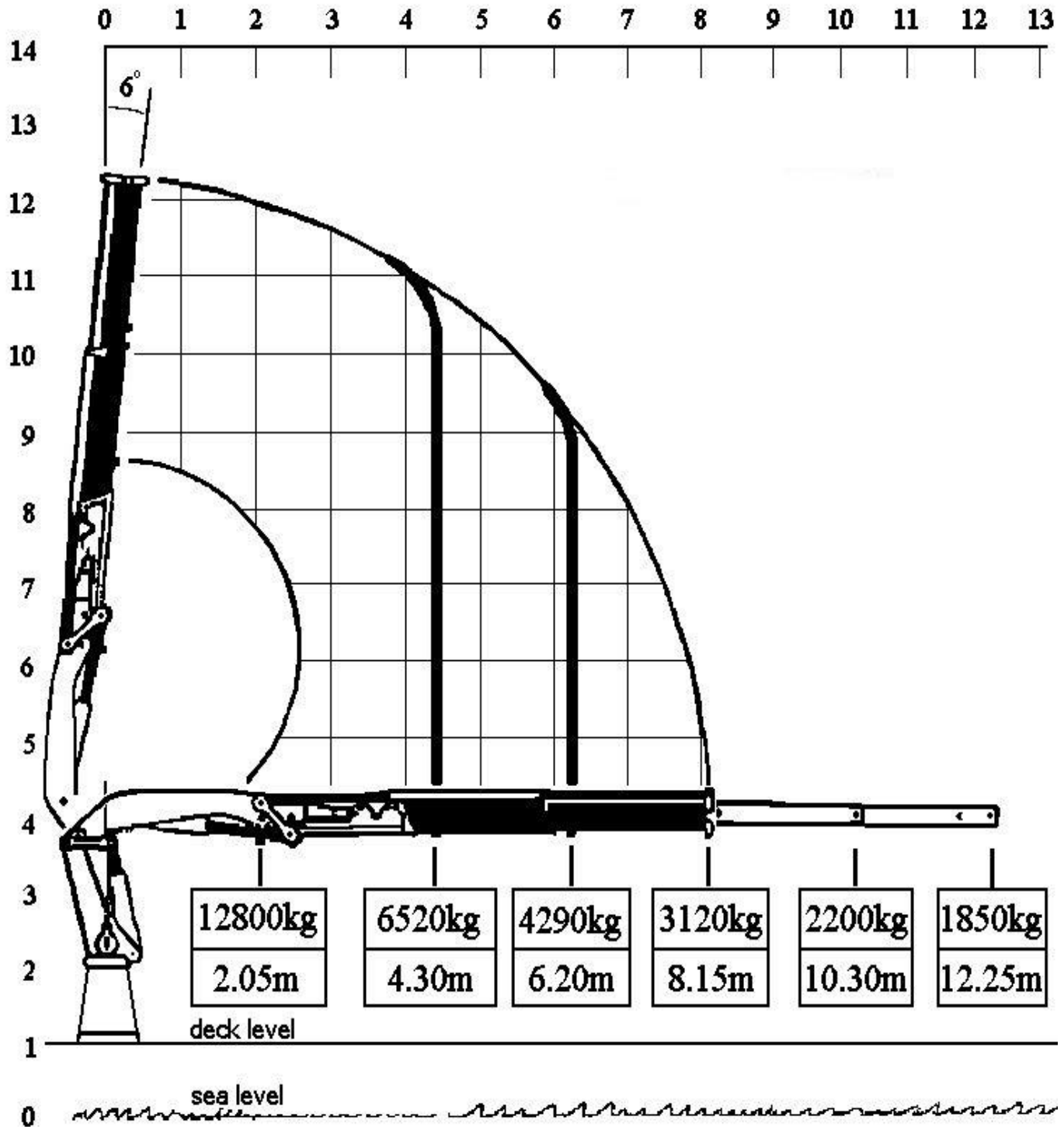


# J.D. Marine & Sons Ltd

[www.jdmarineandsons.com](http://www.jdmarineandsons.com)

All Marine work undertaken, Craft for Hire & Charter, Jetty Repair Specialists

## MULTICAT VESSEL: 'BEV.D' (Forward Crane Lifting Chart)





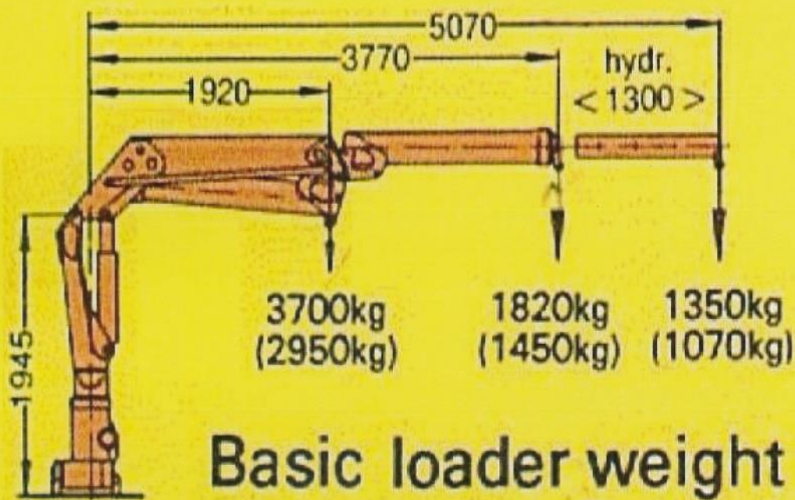
# J.D. Marine & Sons Ltd

[www.jdmarineandsons.com](http://www.jdmarineandsons.com)

All Marine work undertaken, Craft for Hire & Charter, Jetty Repair Specialists

## MULTICAT VESSEL: 'BEV.D' (Aft Deck Crane Lifting Chart)

### A1 Hydraulic Out Reach 5.07m



Basic loader weight 936 kg  
Lift moment 7.1 m/t

max. 220 bar  
(max. 175 bar)

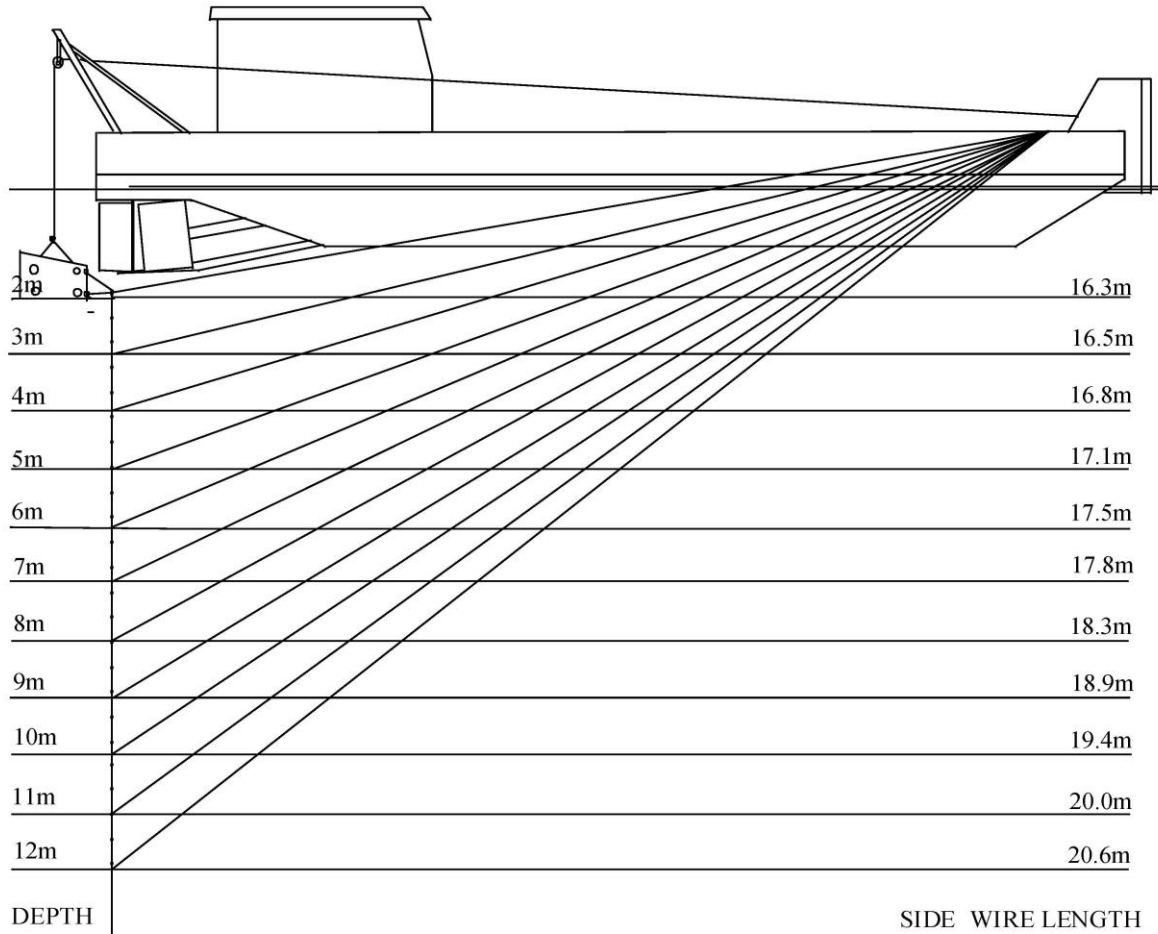


# J.D. Marine & Sons Ltd

[www.jdmarineandsons.com](http://www.jdmarineandsons.com)

All Marine work undertaken, Craft for Hire & Charter, Jetty Repair Specialists

## MULTICAT VESSEL: 'BEV.D' (Ploughing Wire Chart)





# J.D. Marine & Sons Ltd

[www.jdmarineandsons.com](http://www.jdmarineandsons.com)

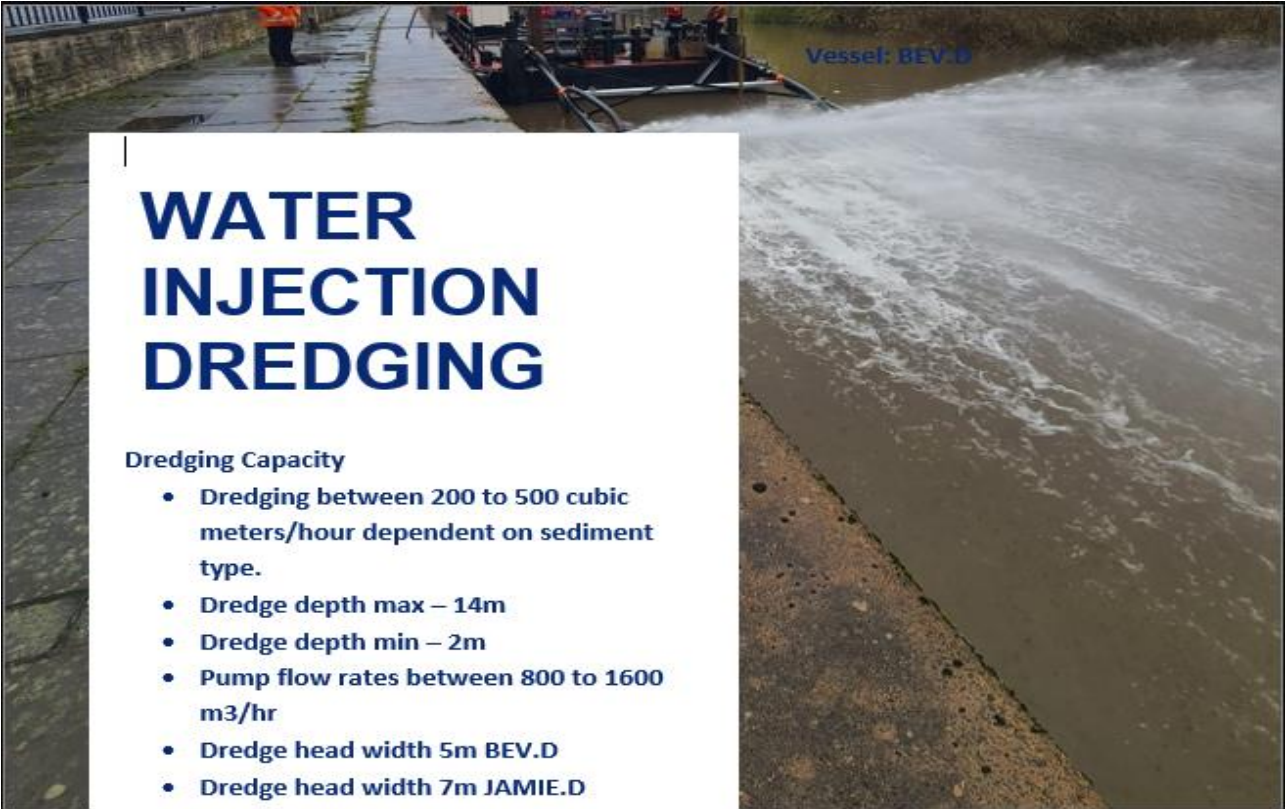
All Marine work undertaken, Craft for Hire & Charter, Jetty Repair Specialists

**MULTICAT VESSEL: 'BEV.D' (Water Injection Dredging)**

## WATER INJECTION DREDGING

### Dredging Capacity

- Dredging between 200 to 500 cubic meters/hour dependent on sediment type.
- Dredge depth max – 14m
- Dredge depth min – 2m
- Pump flow rates between 800 to 1600 m<sup>3</sup>/hr
- Dredge head width 5m BEV.D
- Dredge head width 7m JAMIE.D



Vessel: BEV.D



Vessel: JAMIE.D



J.D. Marine & Sons Ltd

