



J.D. Marine & Sons

www.jdmarineandsons.com

All Marine work undertaken, Craft for Hire & Charter, Jetty Repair Specialists

MULTICAT VESSEL: 'JAMIE.D' (Specifications)

VESSEL NAME: 'JAMIE.D'

TYPE: Multicat- Multi Purpose Workboat

BUILDER: Penryn Plant & Marine

DESIGN: Steel Hull

DATE OF BUILD: 1985 (Re-fit 2001)

YARD No:

OFFICIAL No: 710240

PORT OF REGISTRY: Swansea

CALL SIGN: MFEH6

MMSI No: 235004244

LENGTH: 23.85m

BEAM: 7.50m

DRAFT: 1.70m

AIR DRAFT: (Mast Lowered) To top of Radar 6.4m. Radar removed 6m

DISPLACEMENT: GT-79.47t / Reg Tonnage-55.13t

CRUISE SPEED: 7 knots

MAX SPEED: 8 knots

BOLLARD PULL: 8T

MAIN ENGINE'S: 2no 400bhp Doosan Man

TOTAL POWER: 800bhp

FUEL CAPACITY:

FUEL CONSUMPTION:

RANGE:

FRESH WATER CAPACITY:

GENERATORS:

CRANES: 65T Effer Crane

SPUD LEGS: 2no 15m Spud Legs

Winch: 15T pull Damen Deck Winch

ACCOMODATION: 2 Crew

GALLEY -

CERTIFICATION/CLASS: MCA Cat 2 URN-S01WB0230217





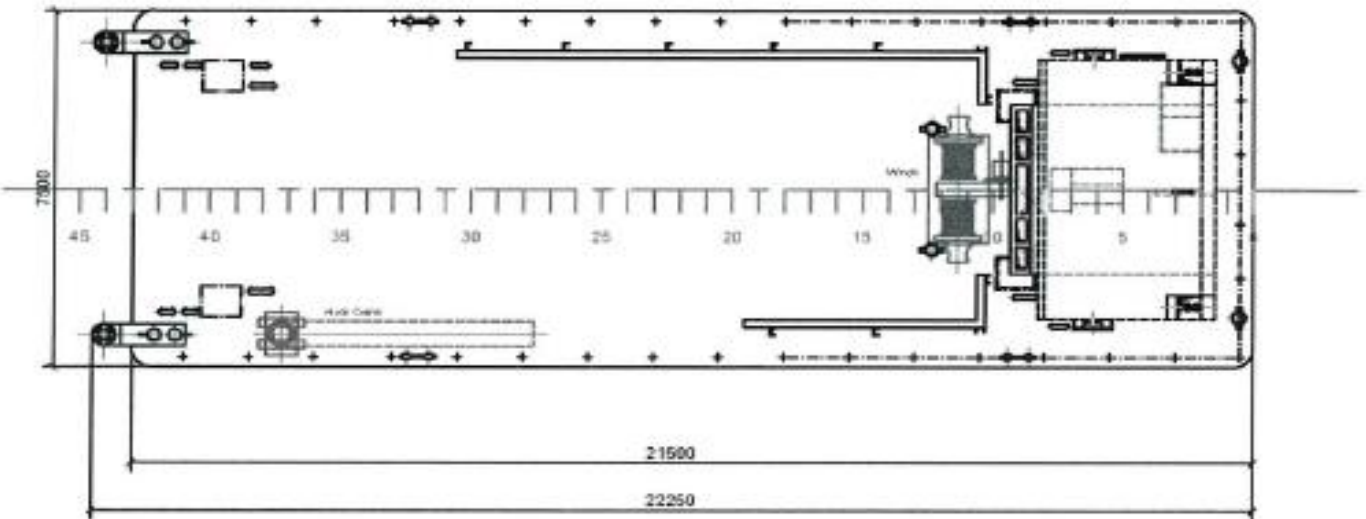
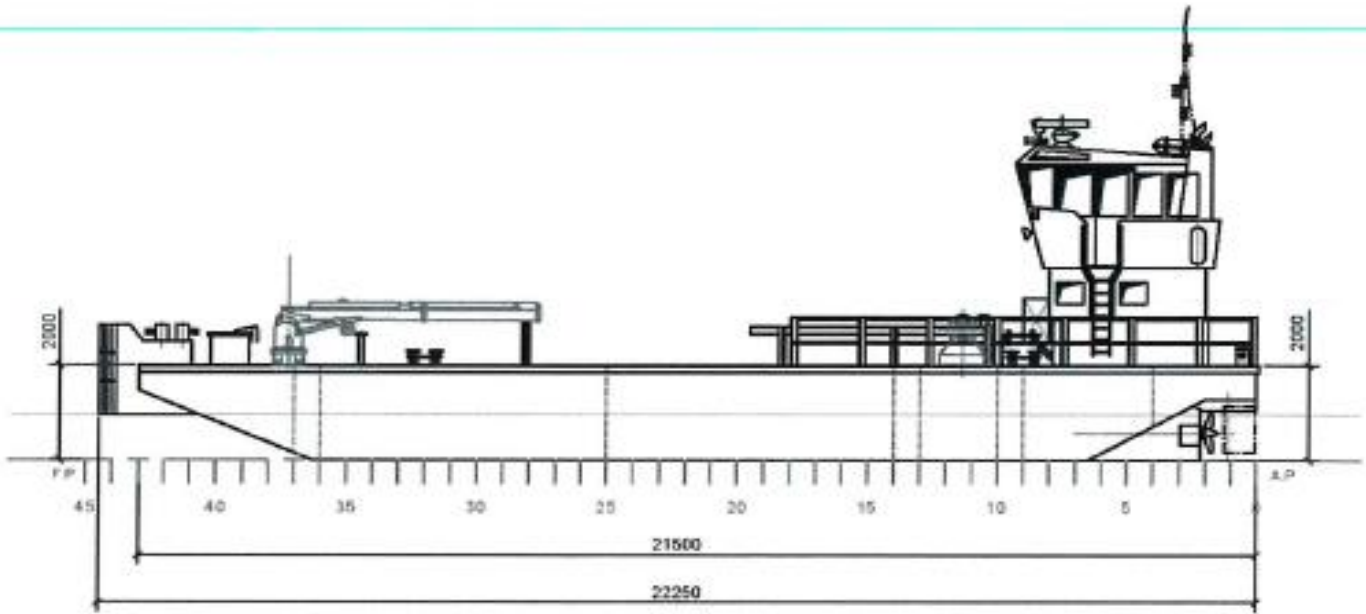
J.D. Marine & Sons

www.jdmarineandsons.com

All Marine work undertaken, Craft for Hire & Charter, Jetty Repair Specialists

MULTICAT VESSEL: 'JAMIE.D'

SERIAL No:



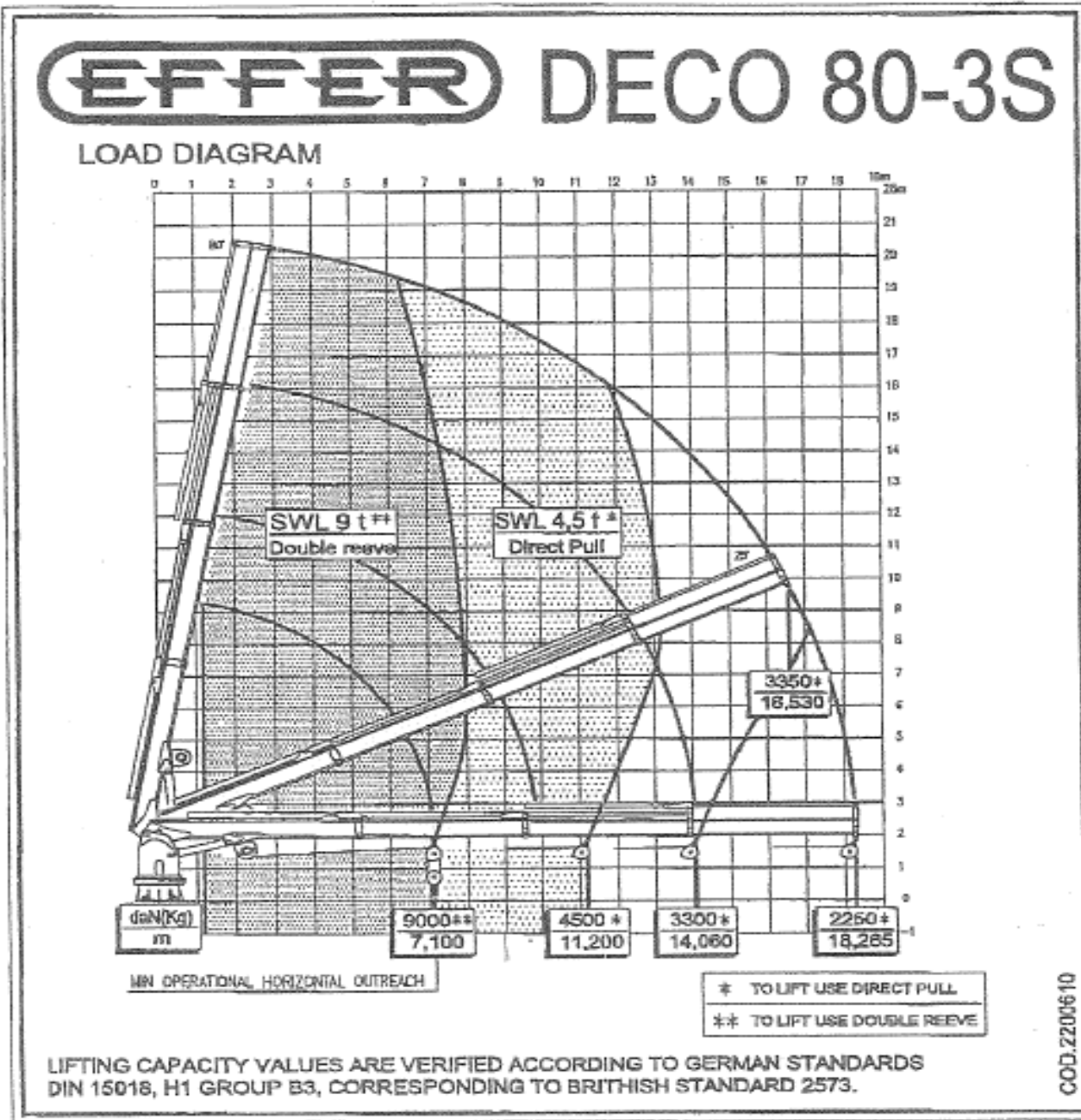


J.D. Marine & Sons

www.jdmarineandsons.com

All Marine work undertaken, Craft for Hire & Charter, Jetty Repair Specialists

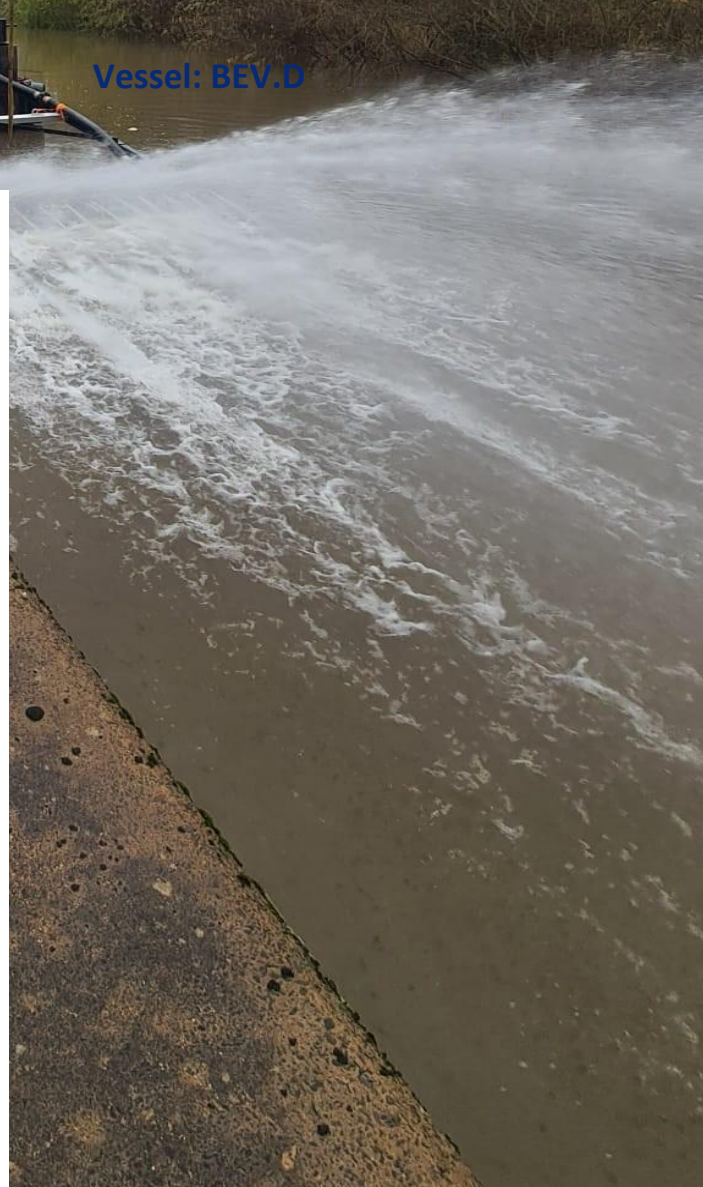
MULTICAT VESSEL: 'JAMIE.D'



WATER INJECTION DREDGING

Dredging Capacity

- Dredging between 200 to 500 cubic meters/hour dependent on sediment type.
- Dredge depth max – 14m
- Dredge depth min – 2m
- Pump flow rates between 800 to 1600 m³/hr
- Dredge head width 5m BEV.D
- Dredge head width 7m JAMIE.D



Vessel: BEV.D

Vessel: BEV.D



Vessel: JAMIE.D



JD Maine & Sons Ltd

