



J.D. Marine & Sons Ltd

www.jdmarineandsons.com

All Marine work undertaken, Craft for Hire & Charter, Jetty Repair Specialists

MULTICAT VESSEL: 'EFFY.D' (Description)



The 'Effy.D' is a 20m x 9m versatile highly manoeuvrable, twin propulsion, Multicat type workboat. The wheelhouse and deck equipment has been situated as far aft as possible to provide a clear and unobstructed working area. There is an Effer 80 t/m Knuckle boom crane positioned on the bow with a lifting of 6300kgs @ 11.5m. The vessel has a deck carrying capacity of 60t with A Bezemer 50t@0-15m/min deck winch with 150m wire. Towing bollards situated at the stern. The vessel is fitted with a bow roller with push knees and as an option can be fitted with a stern 'A' Frame & Sweepbeam/plough box 9m x 1.2m, capacity 12.7t. The vessel has 8no fuel tanks, capacity of 136m³ with a transfer rate 100m³/hr.

Vessel Capabilities:

Towing of Barges and Jack-up Platforms
Jetty Repair, Maintenance & Construction
Buoy & Mooring Deployment/Tending
Dredging & Support Services
Load Transportation
Dive Support
Sea/Flood Defence Work

Civil Engineering/Construction Support
Plough & Bed leveling
Site Investigation Work
River & Shallow water work
Renewable Energy Project Support
Survey & Inspection

Tel: 07580932427 - 24 Hours (01639) 890075

Office: 58 Mariners Quay, Aberavon, Port Talbot SA12 6AN

Email: enquiries@jdmarineandsons.com - Web: www.jdmarineandsons.com

Company No: 8142732 - V.A.T. Reg No: 138912203



J.D. Marine & Sons Ltd

www.jdmarineandsons.com

All Marine work undertaken, Craft for Hire & Charter, Jetty Repair Specialists

MULTICAT VESSEL 'EFFY.D.' (Specifications)

VESSEL NAME: 'EFFY.D.'

TYPE: Multicat- Multi Role Vessel

BUILDER: IHC Deltawerf - Netherlands

DESIGN: Steel Single Hull

DATE OF BUILD: 1982 (Re-fit 2016)

YARD No: 643

OFFICIAL No: 921950

IMO No: 8976140

PORT OF REGISTRY: Port Talbot

CALL SIGN: 2JLS8 Two-Juliect-Lima-Sierra-Eight

MMSI No: 235116983

LENGTH: 20.44m

BEAM: 9.2m -9.6m (Inc Fendering)

DRAFT: 2.1m Aft 1.2m Fwd

DWT: 81t (Transport Weight: 201t)

GT/NT: 121.41 / 69.47t

DECK LOAD: 5T/m²

CRUISE SPEED: 8kn

MAX SPEED: 9kn

BOLLARD PULL: 12t

MAIN ENGINE'S: 2no 500hp GM Detroit 12V71

TOTAL POWER: 1000 Bhp

FUEL CAPACITY: 136,000 Ltrs

FUEL CONSUMPTION: 160ltr/hr

RANGE: 6,000nm

GENERATORS: 1no- 22kva/ 1no- 103kva

WINCHES: Bezemer 50t@0-15m/min.150mx52mm Wire

CRANES: 1no Fwd - 80t/m - Effer 80000/3SL

ACCOMODATION:

GALLEY - w/c-SHOWER.



FUEL TANKS: 4no 18m³ plus 4no 15.9m³

FUEL TRANSFER: 100m³/hr - 1.5 bar

FRESH WATER TANKS: 2no 13m³ & 1no 16.5m³

FRESH WATER PUMP: 25m³/hr - 1.5 bar

FRESH WATER CAPACITY: 40,000 Ltrs

A' FRAME; Stern A frame

PLOUGH: 9m x 1.2m. (12.4t empty 25.1t filled)

CERTIFICATION/CLASS: SCV2 - Category 3 **Unique No:** M16WB0202961

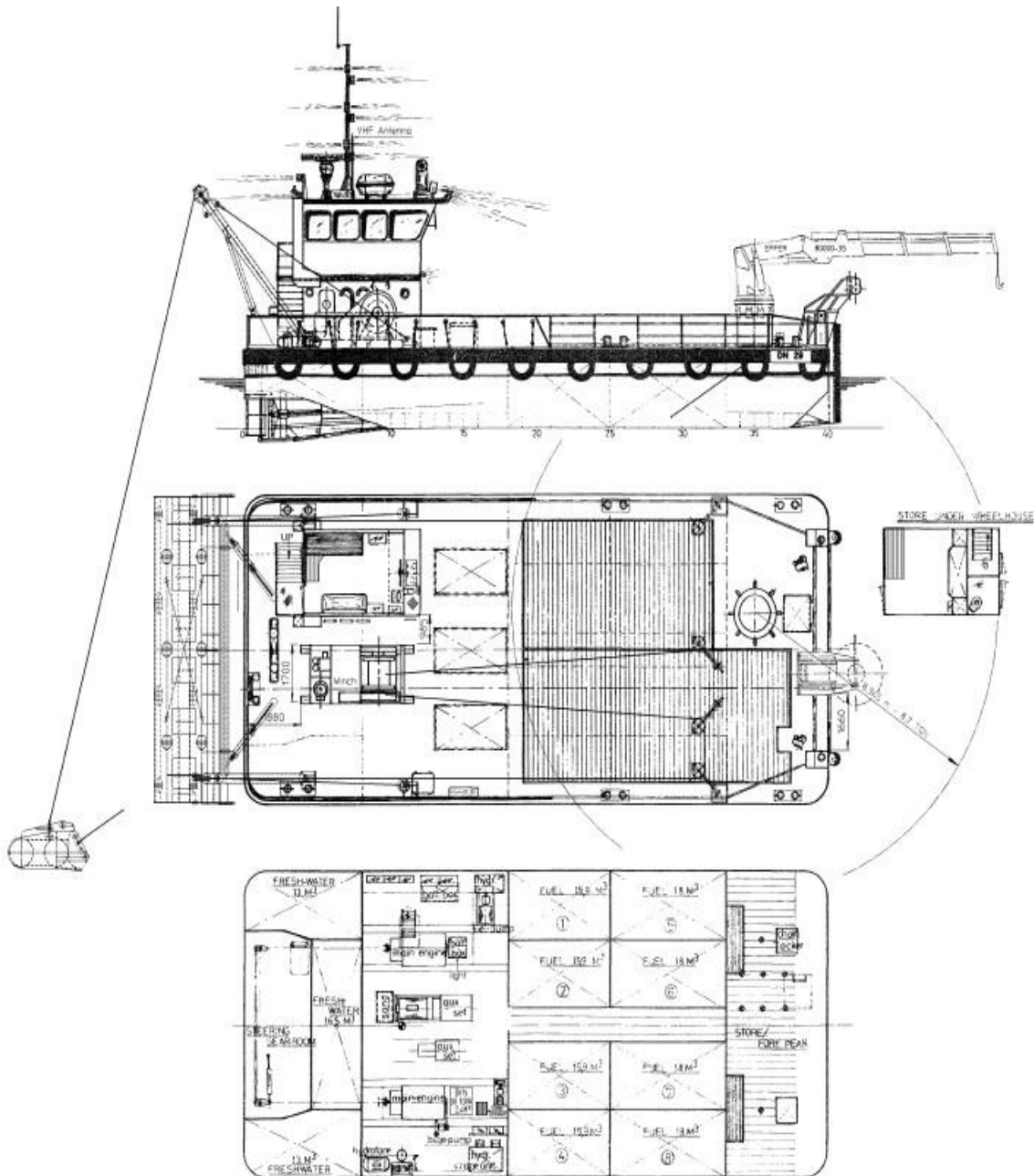


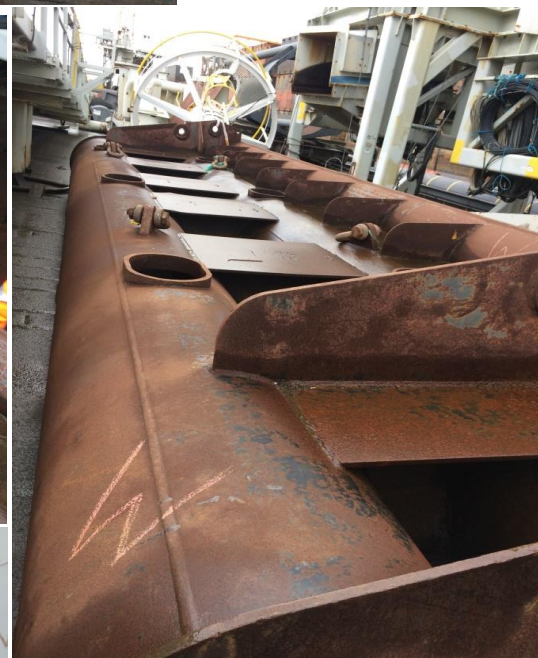
J.D. Marine & Sons Ltd

www.jdmarineandsons.com

All Marine work undertaken, Craft for Hire & Charter, Jetty Repair Specialists

MULTICAT VESSEL: 'EFFY.D' (General Layout)







J.D. Marine & Sons Ltd

www.jdmarineandsons.com

All Marine work undertaken, Craft for Hire & Charter, Jetty Repair Specialists

MULTICAT VESSEL: 'EFFY.D' (Forward Deck Crane Lifting Chart)

